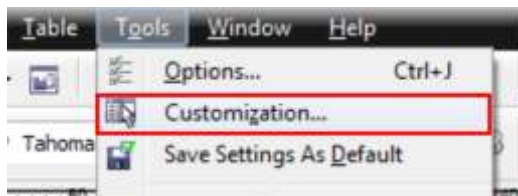


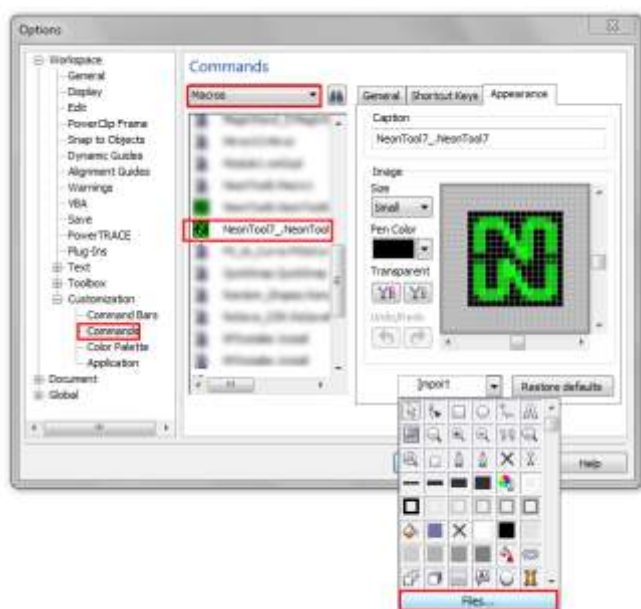
How to install and add a button to the Toolbar

1. Run NeonTool7_X4_setup.exe or NeonTool7_X5_setup.exe or NeonTool7_X6_setup.exe.
2. Start or restart CorelDRAW X4 or CorelDRAW X5 or CorelDRAW X6.
3. Select in the Menu Bar: *Tools-Customization...*
4. In the opening Options select: *Customization - Commands* .
5. In the drop-down list select: *Macros*.
6. In the list of installed macros, search for the macro NeonTool7.



7. In the *Appearance* tab:

- In the *Caption* field – you can adjust the name of the macros or to set it .
- In the *Image* field – you can draw a button, or select from preinstalled, clicking on *Import* .
- *Button Files ...* allows you to import a picture.



8. Drag the macro you want from the list to the toolbar and click OK

