

How to install

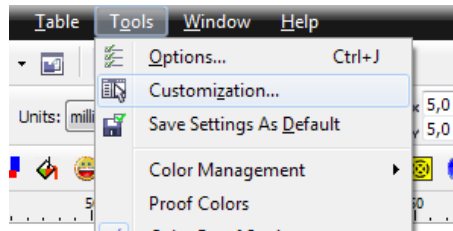
1. Run LEDTool7_X4-X7_setup.exe and follow the messages.
2. Start or restart CorelDraw X4-X7.

Note:

If LEDTool7 was previously installed and you run the installer for the update of the macro, not need to restart CorelDraw.

How to add a button to the CorelDraw Toolbar

1. Select in the Menu Bar: *Tools-Customization...*



2. In the opening *Options* select: *Customization - Commands*.
3. In the drop-down list select: *Macros*.
4. In the list of installed macros, search for the macro LEDTool7.
5. In the *Appearance* tab:
 - In the *Caption* field – you can adjust the name of the macros or to set it
 - In the *Image* field – you can draw a button, or select from preinstalled, clicking on *Import*
 - Button *Files ...* allows you to import a picture.
6. Drag the macro you want from the list to the toolbar and click *OK*

