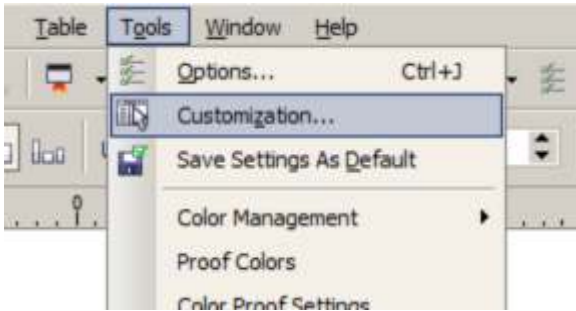


How to install and add a button to the Toolbar

1. Run DrawStone3_setup.exe and follow the messages. Macro and additional components will be installed in the correct folder.
2. Start or restart the CorelDRAW.
3. Select in the Menu Bar: *Tools-Customization...*
4. In the opening Options select: *Customization - Commands*.



5. In the drop-down list select: *Macros*.
6. In the list of installed macros, search for the macro DrawStone3.
7. In the *Appearance* tab:
 - In the *Caption* field – you can adjust the name of the macros or to set it
 - In the *Image* field – you can draw a button, or select from preinstalled, clicking on Import
 - *Button Files ...* allows you to import a picture.
8. Drag the macro you want from the list to the toolbar and click OK

